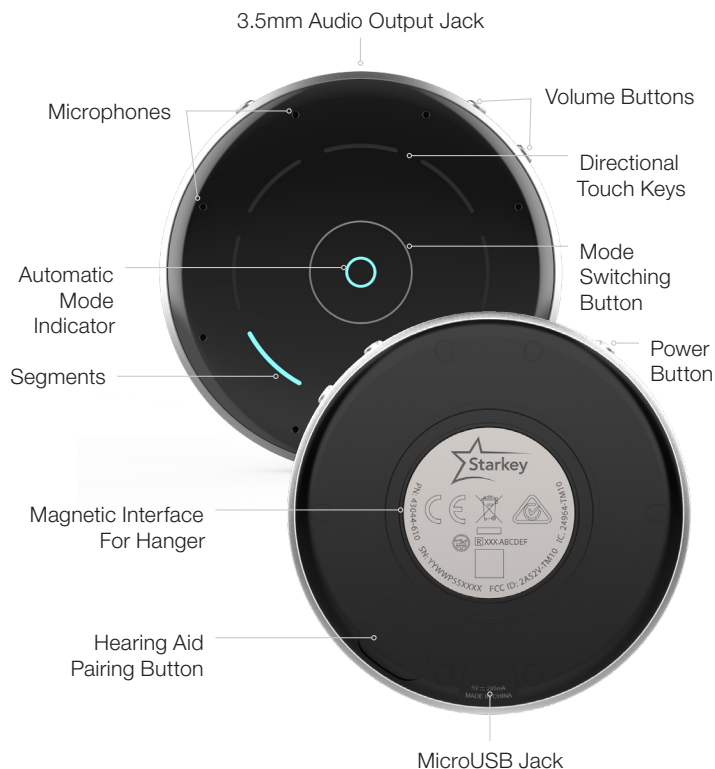



# 2.4 GHz Table Microphone

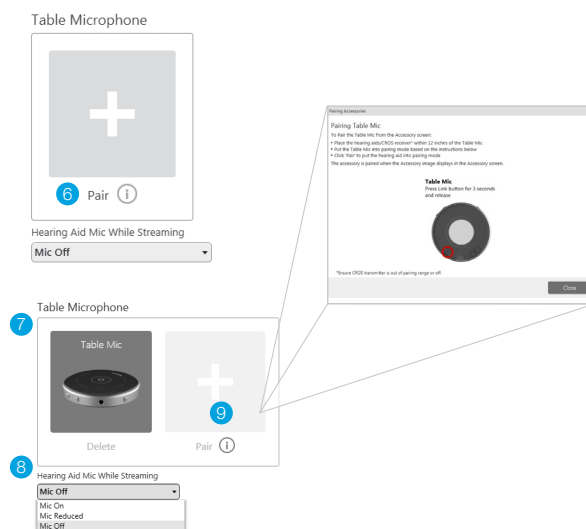


## Pairing

The 2.4 GHz Table Microphone must be paired to interact with compatible 2.4 GHz hearing aids on the Thrive platform. Pairing occurs once, then the hearing aids and Table Microphone will automatically recognize each other. The Table Microphone can be paired within Inspire X, or outside of Inspire X.


### Pairing within Inspire X

- 1 Launch Inspire X, connect and detect hearing aids.
- 2 Select **Accessories** on the left navigation bar.
- 3 Ensure the Table Microphone is powered on by holding the power button for 2–3 seconds until the brackets light up green.
- 4 Place the hearing aids within 6 inches of the Table Microphone.
- 5 Place the Table Microphone in pairing mode by pressing the Hearing Aid Pairing button  on the bottom of the device for 2 seconds. The blinking blue brackets on the top of the device indicate the Table Microphone is in pairing mode.
- 6 Select **Pair** to put the hearing aids in pairing mode.
- 7 Pairing is successful when the Table Microphone displays on the Accessories screen.
- 8 Use the drop-down menu below the Table Mic to set **Hearing Aid Mic while Streaming**. The default is Mic Off while streaming.
- 9 Select the information icon for pairing instructions if needed.



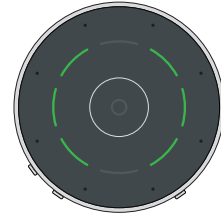
## Pairing (Continued)

### Pairing outside of Inspire X

- 1 Power Off any mobile phone or other accessories that were previously paired with the hearing aids.
- 2 Power off, then power on the hearing aids to place in pairing mode.
- 3 Place the hearing aids within 6 inches of the Table Microphone.
- 4 Place the Table Microphone in pairing mode by pressing the Hearing Aid Pairing button  on the bottom of the device for 2 seconds. The blinking blue brackets on the top of the device indicate the Table Microphone is in pairing mode (A).
- 5 A green bracket indicates pairing is successful (B). One bracket is for the left hearing aid, and one bracket is for the right hearing aid.



(A) Searching for hearing aids



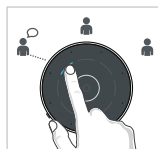
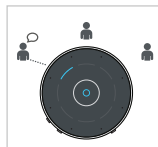
(B) Hearing Aid Pairing Successful

## How it Works

The Table Microphone is designed to improve listening in noise by allowing the user to focus on the primary speaker in a multiple speaker environment such as a meeting. The Table Microphone also functions as a body-worn remote microphone, or as a TV streamer. The Table Microphone can also be used to provide listening in noise benefit for unaided or normal hearing listeners when coupled with wired headphones.

## Use Modes

**Automatic Mode:** Press the Mode Switching Button (center). The O will illuminate in blue when the Automatic Mode is engaged. When the Automatic Mode Indicator is illuminated, Table Microphone automatically follows the primary speaker. The blue segment indicates the active listening direction.



**Manual Mode:** Single Direction

- Tap any segment to focus in a specific direction.
- Tap another segment to focus in a different direction.



**Manual Mode:** Dual Direction

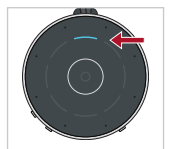
- Tap a 2nd segment and hold for 1 second to focus in a second direction.
- Tap another segment to focus in a different direction.

**Surround Mode:** Designed for listening to multiple speakers in a quiet environment.

- Tap the Mode Switching Button to de-select Automatic Mode and place the Table Microphone in Surround Mode. All blue segments indicate listening in all directions.



**Remote Microphone:** The Table Microphone can be used as a remote microphone when worn on a lanyard around the neck. The Table Microphone should be within 8 inches of the speaker's mouth.

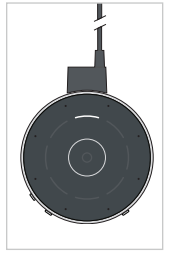


- Attach the magnetic hanger to the back of the Table Microphone. Make sure the hanger is properly secured.
- When the Table Microphone is worn by the speaker the top indicator will light up for 3 seconds.

## Use Modes (Continued)

**TV/Audio Streaming:** The Table Microphone can be used to stream audio from TV, mp3 players and more when connected via the 3.5mm audio output jack.

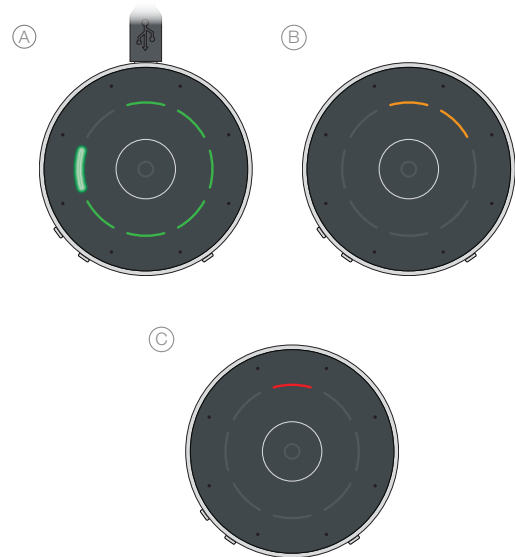
- Insert the audio streaming cable into the microUSB jack.
- Insert the 3.5 mm audio plug of the audio streaming cable into the audio output jack.



## Use

The Table Microphone can be paired to one set of compatible 2.4 GHz hearing aids on the Thrive platform. For best performance, make sure the Table Microphone volume and power buttons are facing you.

- Audio streaming will begin automatically when the Table Microphone is powered on. Audio streaming will stop when the Table Microphone is powered off.
- Additionally, audio streaming can be started/ stopped in several ways:
  - Hearing Aid User Control: Push & Hold or Double Tap
  - Remote Control: Favorite Button
  - Thrive Hearing Control app
- To adjust the stream volume, press the + or – buttons on the Table Microphone. The white top segment blinks when volume is increased and the white bottom segment blinks when volume is decreased.
- The Table Microphone operating range is up to 50 feet (15 meters).
- The Table Microphone can stream for up to 12 hours on a single, full charge.
- The Table Microphone reaches a full charge in about 2 hours.
- Battery Status Indicators:
  - (A) **Green segments** indicate battery charge level. Each segment represents 1 hour. The blinking green segment indicates the current level.
  - (B) **Orange segments** indicate less than 2 hours of battery life.
  - (C) A **Red segment** indicates less than 1 hour of battery life.



Line-in/Line-out connection: White top segment blink indicates line-in connection (e.g., TV audio). White bottom segment blink indicates line-out connection (e.g., wired earphones).